



**2016-2017**  
**Texas Education Data Standards (TEDS)**

**Appendix G**  
**Personal Enrollment Tracking (PET) Guidelines TSDS Unique ID**  
**Version**

Post-Addendum Version 2017.A.2.1  
October 14, 2016

---

**TABLE OF CONTENTS**

**Contents**

Submission Description .....2

2016-2017 PET Submission Timelines .....2

School District Responsibilities .....2

Person Enrollment Tracking (PET) Overview .....2

PET Security.....3

Data and File Requirements for Electronic Transmission via the Internet .....3

Required Software for Transferring a PET Extract File.....3

Minimum System Requirements by Product .....3

Data Submission Specifications .....3

Description of PET Data Elements.....4

Alphabetical List of PET Data Elements and Cross Reference to PEIMS Data Elements .....4

PET Field Edits.....8

PET Field Edits – Restrictions.....8

Available XSD Restrictions .....8

PET Context Edits .....9

PET Validate and Load Process .....9

PET Context Edits.....10

PET Data and file Requirements Rules for XML Schemas.....13

Graphical Representation of PET XSD .....14

PET XSD Data Types and Restrictions.....18

PET XSD Data Types and Restrictions.....18

---

## PET Data Submission Responsibilities and Specifications

Close cooperation of school districts, regional Education Service Centers (ESCs), and the Texas Education Agency (TEA) is required for the successful submission of the Person Enrollment Tracking (PET) data.

### Submission Description

The PET Submission is a report of student enrollment information for the current school year.

### 2016-2017 PET Submission Timelines

TEA requires submission of PET extract files as part of the Public Education Information Management System (PEIMS) data submissions. PET files are submitted each week a district is in session based on the local instructional calendar. PET file submissions should begin on or before the third week of school based on the local instructional calendar. PET files are not required in weeks that a district is not in session for at least one day or during the weeks that PEIMS submissions are due at TEA. **Exception:** Once a district has completed its final summer submission and its PEIMS data file has reached a status of "TURNAROUND REPORTS AVAIL," one additional PET submission is required.

### School District Responsibilities

School districts are responsible for validating and editing data according to edit rules supplied by TEA in the *Texas Education Data Standards*. Districts are responsible for delivery of data that has completed the PET validation process to TEA on a weekly basis.

Questions concerning the *Data Standards* or any of the above topics should be directed to the PEIMS Coordinator at the district's ESC. The coordinator endeavors to answer the question or calls TEA, if necessary. If the coordinator, or the coordinator's alternate, is not available at the ESC after a reasonable amount of time, district personnel may call TEA directly at (512) 463-9229 for PEIMS or EDIT+ questions. A district should **always** attempt to contact the ESC before calling TEA.

### Person Enrollment Tracking (PET) Overview

PET maintains up-to-date enrollment data for all students in Texas public school districts. Districts submit enrollment data for students in grades Early Education (EE) through 12 weekly, using an EDIT+ sub- application. The enrollment data required are: BirthDate, SexCode, GenerationCode, AmericanIndianAlaskanNativeCd, AsianCd, BlackAfricanAmericanCd, NativeHawaiianPacificIslandCd, WhiteCd, HispanicLatinoCd, EnrollDate, WithdrawDate, campus ID of enrollment, enrollment date and withdrawal date. School districts can only submit PET data as extracted from their SIS. Districts can search PET to locate students or view enrollment histories.

When PET data is searched through the EDIT+ system, demographic information from the TSDS Unique ID System is displayed.

A PET file submission will no longer add a new student to PID.

A PET file submission will not update an existing student's demographics record in the TSDS Unique-ID system.

A new student can only be added, or an existing student's demographics can only be updated through the TSDS Unique ID System.

A student must have a TSDS Unique ID assigned before being included in a PET file submission.

For more information about the Person Enrollment Tracking (PET) process, please contact [EDITPlus@tea.state.tx.us](mailto:EDITPlus@tea.state.tx.us).

**PET Security**

Access to PET is secured by multiple levels of system and application-level security to protect the privacy of student education records as established by the *Family Educational Rights and Privacy Act (FERPA)*. Please refer to PET Access of the *Texas Education Data Standards* for information about requirements and forms to obtain access to the PET Application.

**Data and File Requirements for Electronic Transmission via the Internet**

Please refer to Section 1 of the *Texas Education Data Standards* for information about the data requirements for electronic transmissions of PET files.

**Required Software for Transferring a PET Extract File**

The process of transferring a PET extract file to TEA is the same process as for sending a PEIMS data file through EDIT+. A PET extract file must be sent using the .NET applet. For a machine that does not have .NET installed, the software can be downloaded from the **PET Home** page (or the **EDIT+ Home** page for EDIT+ PET users.) The *EDIT+ User Reference and Training Guide* at <http://www.tea.state.tx.us/index4.aspx?id=6553> has information about the software download process.

The *Technical Tips for .NET Installation and Usage* documentation is available to print and read before installing .NET. This document is located at the “Tech Tips” link of the EDIT+ External Website at: <http://www.tea.state.tx.us/index4.aspx?id=6553>.

**Note:** In addition to the .NET Framework download, Adobe Reader® is required to view PET reports.

**Minimum System Requirements by Product**

Please refer to Section 1 of the *Texas Education Data Standards* for information about minimum system requirements.

**Data Submission Specifications**

The following requirements are for use by PET users in formatting files for transmission to the agency. Failure to adhere to the standards can delay processing of the data or cause the data to be rejected.

Data for each reporting entity are in a separate PET Extract File formatted consistent with the PET XML Schema Definition (XSD) before starting the PET transmission. Files contain only district data and should be complete submissions of district data.

PET data files are constructed using the specifications outlined in the PET Data and File Requirements section. The PET file name identifies the reporting entity and follows this naming convention:

- Maximum 11 characters

Position	1 <sup>st</sup>	2 <sup>nd</sup> – 5 <sup>th</sup>	6 <sup>th</sup> – 11 <sup>th</sup>	File Extension (opt)
<b>Description</b>	PET Submission (P)	4 digit school year 2016-2017 (2017)	County-District Number	P2017101912.xml
<b>Examples</b>				
P2017101912 = 2016-2017 PET Submission for Houston ISD with no file extension				
P2017227901.xml = 2016-2017 PET Submission Austin ISD with a file extension				

**Note:** EDIT+ file naming conventions do not apply to PET files.

**Description of PET Data Elements**

This section contains an alphabetical listing of all the PET data elements that are reported by school districts, followed by a definition page for each data element. Some of the PET data elements have the same specifications as PEIMS data elements. Descriptions of shared elements are found in Section 8.3 of the *Texas Education Data Standards*. Information about the code tables for shared data elements is in Section 8.4 of the *Texas Education Data Standards*.

**Alphabetical List of PET Data Elements and Cross Reference to PEIMS Data Elements**

Data Element Name	Data Element ID	Page Number in Appendix G:	Code Table ID
AmericanIndianAlaskanNativeCd	E1059		C088
AsianCd	E1060		C088
BirthDate	E0006P	5	
BlackAfricanAmericanCd	E1061		C088
CampusIdofEnrollment	E0782		
EnrollDate	E1050P	6	
FirstName	E0703		
GenerationCode	E0706		C012
GradeLevelCode	E0017		C050
HispanicLatinoCd	E1064		C088
LastName	E0705		
LocalID (LOCAL-STUDENT-ID in PEIMS)	E0923		
MiddleName	E0704		
NativeHawaiianPacificIslandCd	E1062		C088
SexCode	E0004		C013
StudentID	E0001		
TXUniqueStudentID	E1523		
WhiteCd	E1063		C088
WithdrawDate	E1051P	7	

Element ID	Name	Date Issued	Date Updated
E0006P	BirthDate	01/16/06	05/29/09
Definition			
BirthDate indicates the year, month, and day of the person's birth.			
Code Table ID		Domain of Values	
Special Instructions			
BirthDate must be a valid date and less than enrollment date. (Implemented by edits P029 and P030.)			
Data Specifications			
Length	Type	Pattern	
10	CODED	yyyy-mm-dd	

Element ID	Name	Date Issued	Date Updated
E1050P	EnrollDate	01/16/06	12/01/15
<b>Definition</b>			
<p>EnrollDate indicates the year, month, and day of the student’s enrollment at the reporting campus</p>			
<b>Code Table ID</b>		<b>Domain of Values</b>	
		yyyy = 2016-2017 mm = 01-12 dd = 01-31	
<b>Special Instructions</b>			
<p>EnrollDate must be a valid date between 2016-06-01 and 2017-08-31. EnrollDate must not be greater than the PET file submission date. (implemented by edits P020 and P021)</p> <p>EnrollDate is a required data element. Each PETEventSet must have one and only one EnrollDate.</p>			
<b>Data Specifications</b>			
<b>Length</b>	<b>Type</b>	<b>Pattern</b>	
10	CODED	yyyy-mm-dd	

Element ID	Name	Date Issued	Date Updated
E1051P	WithdrawDate	01/16/06	12/01/15
Definition			
<p>WithdrawDate indicates the year, month, and day of the student's withdrawal from the reporting campus.</p>			
Code Table ID		Domain of Values	
		yyyy = 2016-2017 mm = 01-12 dd = 01-31	
Special Instructions			
<p>WithdrawDate must be a valid date between 2016-06-01 and 2017-08-31. WithdrawDate must not be greater than the PET file submission date and it must be greater than the EnrollDate in its associated PETEventSet. (implemented by edit P022, P023, and P024)</p> <p>When available, it is a required data element and must be reported. Each PETEventSet must have one and only oneWithdrawDate.</p>			
Data Specifications			
Length	Type	Pattern	
10	CODED	yyyy-mm-dd	



**PET Edits Overview**

This section documents the edits that ensure the quality of the enrollment data submitted to TEA. The edits are organized into the following categories:

- PET Field Edits
- PET Context Edits

A student must exist in the TSDS Unique-ID System before a PET event can be created for the student.

**PET Field Edits**

A PET event is an individual student’s enrollment to or withdrawal from a CAMPUS-ID-OF- ENROLLMENT tightly coupled with the date the enrollment or withdrawal took place. Although the districts are provided with a manual capability to create a PET event, most districts submit their enrollment and withdrawal events to TEA in an XML-based extract file. The file is referred to as an „extract” file because it is created through a vendor-supported process that extracts event information from a district’s student information system. The extracted data are stored in an XML-based file consistent with the PET XML Schema Definition (XSD). Prior to transferring the PET Extract File to TEA, the system verifies the structure of the file against the PET XSD. In addition, the system verifies the contents of the file against the declared data types and restrictions defined for each element in the PET XSD for each simple type element. The data types and restrictions defined with the PET XSD constitute the PET Field Edits.

**PET Field Edits – Restrictions**

Restrictions control acceptable values for XML elements. Restrictions on XML elements are called facets. The following table provides a listing of restrictions used in the PET XSD. In combination with an element’s declared data type, restrictions enable the XSD validation process not only to validate the structure of the XML file but also to validate the data values contained within the file against its XML schema definition. Every simple type element within the PET XSD has a restriction that limits the domain of acceptable values. PET Extract Files improperly structured or containing unacceptable values will not transfer to the TEA for further processing.

**Available XSD Restrictions**

Restriction	Description
minInclusive	Specifies the lower bounds for numeric values (the value must be greater than or equal to this value)
maxInclusive	Specifies the upper bounds for numeric values (the value must be less than or equal to this value)
minLength	Specifies the minimum number of characters or list items allowed (the value must be equal to or greater than zero)
maxLength	Specifies the maximum number of characters or list items allowed (the value must be equal to or greater than zero)
pattern	Defines the exact sequence of characters that are acceptable
whiteSpace	Specifies how white space (line feeds, tabs, spaces, and carriage returns) is handled

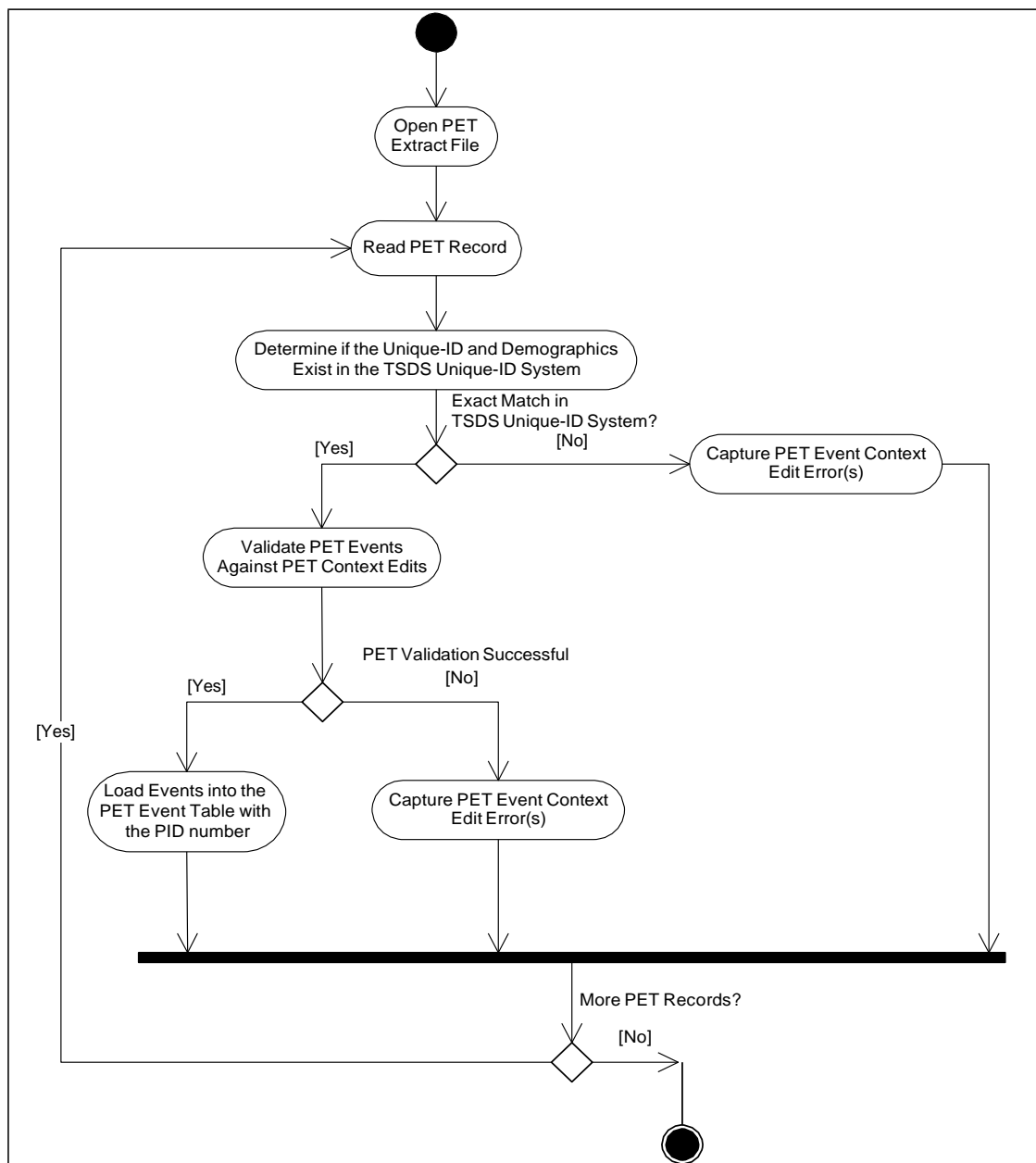
## PET Context Edits

After a PET Extract File is successfully validated against the PET XSD and transferred to TEA, the system places the file in a queue for further processing. As resources are available, the file is opened and the PET Records in the file are validated and loaded. As illustrated below, the PET validation and load process is divided into two logical stages:

- Verify the student in TSDS Unique ID System; and
- Validate and load the PET events.

PET Context Edits are used in both stages. If the system does not find an exact match for the student ID and major demographics in TSDS Unique ID System, an error will result. If the system does find an exact match in TSDS Unique ID System, the PET events are validated against appropriate PET Context Edits before being loaded into the PET Event table. Each of the PET Context Edits is presented in the next section.

### PET Validate and Load Process



Each PET Context Edit is traced to its associated PEIMS Edit Number, if applicable. A PET Context Edit is not required for any of the following data elements because data quality is assured through the XSD validation process:

- BirthDate
- SexCode
- GenerationCode
- AmericanIndianAlaskanNativeCd
- AsianCd
- BlackAfricanAmericanCd
- NativeHawaiianPacificIslandCd
- WhiteCd
- HispanicLatinoCd
- EnrollDate
- WithdrawDate

PET Context Edits have been defined for BirthDate, SexCode, GenerationCode, AmericanIndianAlaskanNativeCd, AsianCd, BlackAfricanAmericanCd, NativeHawaiianPacificIslandCd, WhiteCd, and HispanicLatinoCd in support of the PET Student Add process. See “PET Edits” section.

### PET Context Edits

PET EDIT #	Data Element(s)	Edit Rule Text	PEIMS Edit #
P001	StudentID	The first character of StudentID must be “S” or “0”-“8”.	10001
P002	StudentID	Each character of StudentID must not be the same number.	10002
P003	StudentID	The first three characters of StudentID must not be “000”.	10003
P004	StudentID	If first character of StudentID is not an “S”, the fourth and fifth characters must not be “00”.	10005
P005	StudentID	If first character of StudentID is not an “S”, the last four characters must not be “0000”.	10006
P006	FirstName, MiddleName, LastName	Former edit deleted.	
P007	FirstName, MiddleName, LastName	The FirstName, MiddleName, and/or LastName must only contain the following characters: <ul style="list-style-type: none"> <li>• A-Z</li> <li>• 0-9</li> <li>• Apostrophe</li> <li>• Hyphen</li> <li>• Space character</li> </ul>	10015
P008	FirstName, MiddleName, LastName	Name must not contain only apostrophes.	10015

<b>PET EDIT #</b>	<b>Data Element(s)</b>	<b>Edit Rule Text</b>	<b>PEIMS Edit #</b>
P009	FirstName, MiddleName, LastName	Name must not contain only hyphens.	10015
P010	FirstName, LastName	Name must not contain only spaces.	10015
P011	MiddleName	Former edit deleted	
P012	FirstName, MiddleName, LastName	The FirstName, MiddleName, and/or LastName must not contain only “0” – “9”.	10017
P013	DistrictID	The DistrictID contained within the CampusIDofEnrollment must match an entry registered with the TEA.	01001
P014	CampusIDof Enrollment	The first six characters of the CampusIDofEnrollment must be the same as the ID of the district transferring the PET Extract File.	11011 40002 40808
P015	CampusIDof Enrollment	CampusIDofEnrollment must match an entry registered with the TEA as an active instructional campus and is not a budgeted campus.	11011 40002 40808
P018	CampusIDof Enrollment	When creating or maintaining a PET Event, the first six characters of the CampusIDof Enrollment must match the district-level user’s Agent ID.	NA
P019	CampusIDof Enrollment	When creating or maintaining a PET Event, the CampusIDofEnrollment must match the campus-level user’s Agent ID.	NA
P020	EnrollDate	When creating or maintaining a PET Event, the EnrollDate must fall within the date range defined for the PET School Year in context. In general, the school year begins on June 1 and extends through August 31 of the following year.	NA
P021	EnrollDate	The EnrollDate must not be greater than the PET file submission date.	NA
P022	WithdrawDate	When creating or maintaining a PET Event, if a prior enrollment record for the CampusIDofEnrollment doesn’t exist, the withdrawal event is invalid.	NA
P023	WithdrawDate	When creating or maintaining a PET Event, the WithdrawDate must fall within the date range defined for the PET School Year in context. In general, the school year begins on June 1 and extends through August 31 of the following year.	NA
P024	WithdrawDate	The WithdrawDate must not be greater than the PET file submission date.	NA

PET EDIT #	Data Element(s)	Edit Rule Text	PEIMS Edit #
P025	LocalID	When creating or maintaining a PET Event, the Local ID must be consistent with the <i>Texas Education Data Standards</i> Name Field pattern. In addition to the space character, this pattern allows any of the following characters: ABCDEF GHIJKLMNOPQRSTUVWXYZ0123456789 ~ ! @ # \$ % ^ & * ( ) - _ + = : ; " ' , . / < > ?	NA
P026	CampusData	Two or more CampusData elements for the same CampusIDofEnrollment for one Student are invalid. Note: All the PET Events for one Student at a given CampusIDofEnrollment should be clustered together in one or more PETEventSet elements.	NA
P027	PETEventSet	Two or more incomplete PETEventSets for the same CampusIDofEnrollment for one Student are invalid.	NA
P028	EnrollDate / WithdrawDate	Two or more equal PET Event dates for the same CampusIDofEnrollment for one Student in two different PET Event Sets are invalid.	NA
P029	BirthDate	BirthDate must be a valid date.	10141
P030	BirthDate	BirthDate must be less than the enrollment date.	NA
P031	AmericanIndianAlaskanNativeCd, AsianCd, BlackAfricanAmericanCd, NativeHawaiianPacificIslandCd, or WhiteCd	AmericanIndianAlaskanNativeCd, AsianCd, BlackAfricanAmericanCd, NativeHawaiianPacificIslandCd, or WhiteCd must be „1“.	1011M

### **PET Data and file Requirements Rules for XML Schemas**

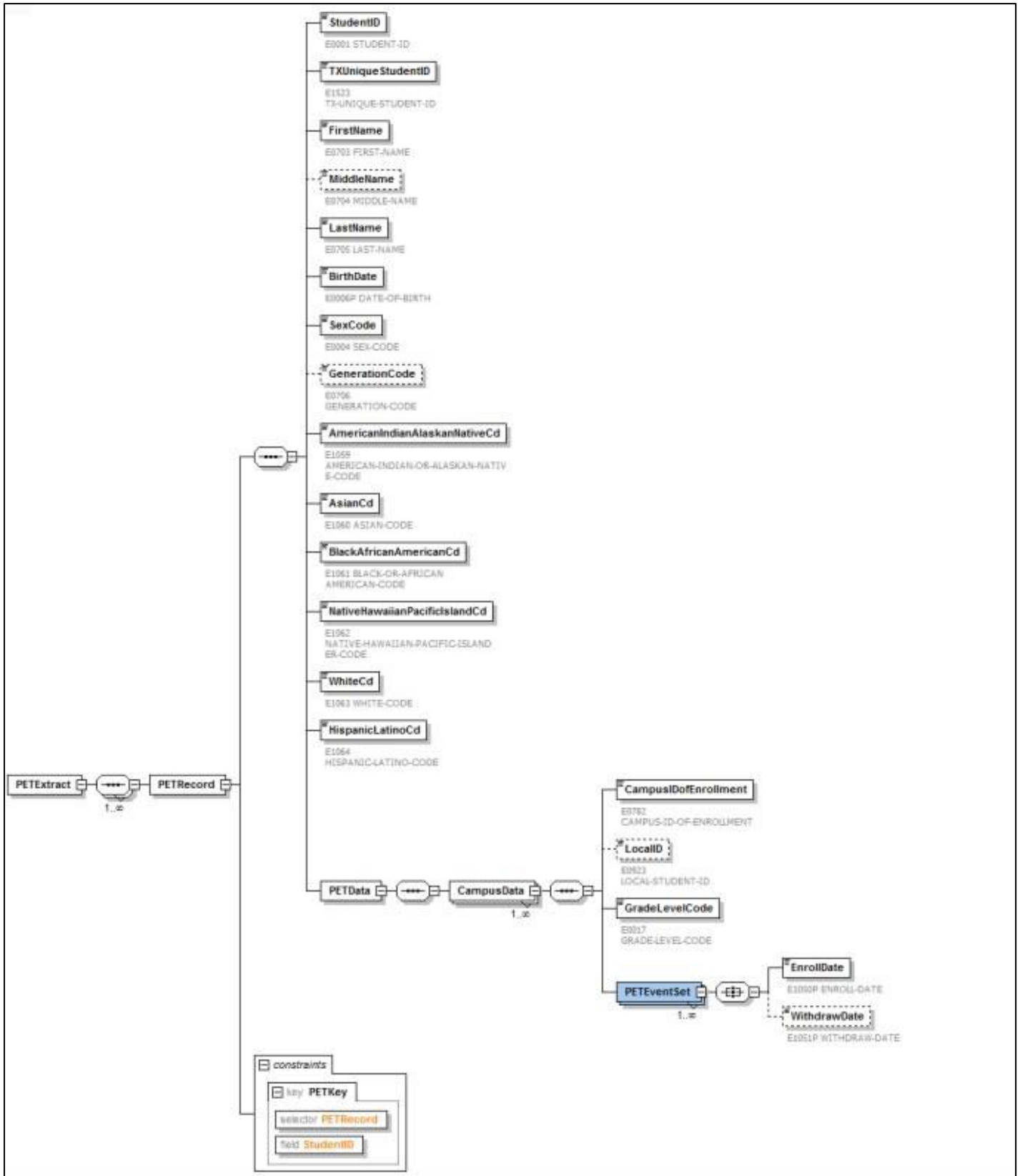
School districts are permitted to submit student enrollment and withdrawal events to TEA using the XML-based extract file process. The extract file process extracts information from district student information systems and stores it in an XML-based file consistent with the PET **XML Schema Definition (XSD)**.

The following business rules apply for XML schemas and the XSD validation process:

- The XML schema supports a number of built-in data types (e.g., date). When an XML element has a defined data type, a restriction is placed on the element content.
- The XML schema supports restrictions. In conjunction with the element's declared data type, restrictions are used to control acceptable values for XML elements.
- Declared data types and restrictions enable the XSD validation process.
- The client-side XSD validation process is used to validate the XML file structure and data values against the schema definition.
- Every element within the PET XSD has a defined data type and one or more restrictions.
- PET performs a client-side validation of the PET extract file against the published PET XSD.
- If the client-side validation fails, PET does not transfer the extract file to TEA.

**Note:** Similar to the *Texas Education Data Standards*, the PET XSD is updated and republished by TEA annually. Student Information System (SIS) vendors support updates to the PET XSD.

### Graphical Representation of PET XSD



## PET XML Schema Definition (XSD)

```

<xs:schema xmlns:xs="http://www.w3.org/2001/XMLSchema" id="PIDEnrollmentTracking">
  <xs:element name="PETExtract">
    <xs:complexType>
      <xs:sequence maxOccurs="unbounded">
        <xs:element name="PETRecord">
          <xs:complexType>
            <xs:sequence>
              <xs:element name="StudentID">
                <xs:annotation>
                  <xs:documentation>E0001 STUDENT-ID</xs:documentation>
                </xs:annotation>
                <xs:simpleType>
                  <xs:restriction base="xs:string">
                    <xs:pattern value="[S0-8]{0-9}{8}"/>
                  </xs:restriction>
                </xs:simpleType>
              </xs:element>
              <xs:element name="TXUniqueStudentID">
                <xs:annotation>
                  <xs:documentation>E1523 TX-UNIQUE-STUDENT-ID</xs:documentation>
                </xs:annotation>
                <xs:simpleType>
                  <xs:restriction base="xs:string">
                    <xs:pattern value="[0-9]{10}"/>
                  </xs:restriction>
                </xs:simpleType>
              </xs:element>
              <xs:element name="FirstName">
                <xs:annotation>
                  <xs:documentation>E0703 FIRST-NAME</xs:documentation>
                </xs:annotation>
                <xs:simpleType>
                  <xs:restriction base="xs:string">
                    <xs:minLength value="1"/>
                    <xs:maxLength value="17"/>
                    <xs:whiteSpace value="preserve"/>
                    <xs:pattern value="[A-Z0-9 -]{1,}"/>
                  </xs:restriction>
                </xs:simpleType>
              </xs:element>
              <xs:element name="MiddleName" minOccurs="0">
                <xs:annotation>
                  <xs:documentation>E0704 MIDDLE-NAME</xs:documentation>
                </xs:annotation>
                <xs:simpleType>
                  <xs:restriction base="xs:string">
                    <xs:minLength value="0"/>
                    <xs:maxLength value="14"/>
                    <xs:whiteSpace value="preserve"/>
                    <xs:pattern value="[A-Z=0-9 -]{0,}"/>
                  </xs:restriction>
                </xs:simpleType>
              </xs:element>
              <xs:element name="LastName">
                <xs:annotation>
                  <xs:documentation>E0705 LAST-NAME</xs:documentation>
                </xs:annotation>
                <xs:simpleType>
                  <xs:restriction base="xs:string">
                    <xs:minLength value="1"/>
                    <xs:maxLength value="25"/>
                    <xs:whiteSpace value="preserve"/>
                    <xs:pattern value="[A-Z0-9 -]{1,}"/>
                  </xs:restriction>
                </xs:simpleType>
              </xs:element>
              <xs:element name="BirthDate">
                <xs:annotation>
                  <xs:documentation>E0006P DATE-OF-BIRTH</xs:documentation>
                </xs:annotation>
            
```



```

</xs:annotation>
<xs:simpleType>
  <xs:restriction base="xs:date"/>
</xs:simpleType>
</xs:element>
<xs:element name="SexCode">
  <xs:annotation>
    <xs:documentation>E0004 SEX-CODE</xs:documentation>
  </xs:annotation>
  <xs:simpleType>
    <xs:restriction base="xs:string">
      <xs:pattern value="[M|F]"/>
    </xs:restriction>
  </xs:simpleType>
</xs:element>
<xs:element name="GenerationCode" minOccurs="0">
  <xs:annotation>
    <xs:documentation>E0706 GENERATION-CODE</xs:documentation>
  </xs:annotation>
  <xs:simpleType>
    <xs:restriction base="xs:string">
      <xs:maxLength value="1"/>
      <xs:pattern value="([1-9 A-C])*"/>
    </xs:restriction>
  </xs:simpleType>
</xs:element>
<xs:element name="AmericanIndianAlaskanNativeCd">
  <xs:annotation>
    <xs:documentation>E1059 AMERICAN-INDIAN-OR-ALASKAN-NATIVE-CODE</xs:documentation>
  </xs:annotation>
  <xs:simpleType>
    <xs:restriction base="xs:string">
      <xs:pattern value="[01]"/>
    </xs:restriction>
  </xs:simpleType>
</xs:element>
<xs:element name="AsianCd">
  <xs:annotation>
    <xs:documentation>E1060 ASIAN-CODE</xs:documentation>
  </xs:annotation>
  <xs:simpleType>
    <xs:restriction base="xs:string">
      <xs:pattern value="[01]"/>
    </xs:restriction>
  </xs:simpleType>
</xs:element>
<xs:element name="BlackAfricanAmericanCd">
  <xs:annotation>
    <xs:documentation>E1061 BLACK-OR-AFRICAN AMERICAN-CODE</xs:documentation>
  </xs:annotation>
  <xs:simpleType>
    <xs:restriction base="xs:string">
      <xs:pattern value="[01]"/>
    </xs:restriction>
  </xs:simpleType>
</xs:element>
<xs:element name="NativeHawaiianPacificIslandCd">
  <xs:annotation>
    <xs:documentation>E1062 NATIVE-HAWAIIAN-PACIFIC-ISLANDER-CODE</xs:documentation>
  </xs:annotation>
  <xs:simpleType>
    <xs:restriction base="xs:string">
      <xs:pattern value="[01]"/>
    </xs:restriction>
  </xs:simpleType>
</xs:element>
<xs:element name="WhiteCd">
  <xs:annotation>
    <xs:documentation>E1063 WHITE-CODE</xs:documentation>
  </xs:annotation>
  <xs:simpleType>

```

```

    <xs:restriction base="xs:string">
      <xs:pattern value="[01]"/>
    </xs:restriction>
  </xs:simpleType>
</xs:element>
<xs:element name="HispanicLatinoCd">
  <xs:annotation>
    <xs:documentation>E1064 HISPANIC-LATINO-CODE</xs:documentation>
  </xs:annotation>
  <xs:simpleType>
    <xs:restriction base="xs:string">
      <xs:pattern value="[01]"/>
    </xs:restriction>
  </xs:simpleType>
</xs:element>
<xs:element name="PETData">
  <xs:complexType>
    <xs:sequence>
      <xs:element name="CampusData" maxOccurs="unbounded">
        <xs:complexType>
          <xs:sequence>
            <xs:element name="CampusIDofEnrollment">
              <xs:annotation>
                <xs:documentation>E0782 CAMPUS-ID-OF-ENROLLMENT</xs:documentation>
              </xs:annotation>
              <xs:simpleType>
                <xs:restriction base="xs:string">
                  <xs:pattern value="[0-9]{9}"/>
                </xs:restriction>
              </xs:simpleType>
            </xs:element>
            <xs:element name="LocalID" minOccurs="0">
              <xs:annotation>
                <xs:documentation>E0923 LOCAL-STUDENT-ID</xs:documentation>
              </xs:annotation>
              <xs:simpleType>
                <xs:restriction base="xs:string">
                  <xs:minLength value="0"/>
                  <xs:maxLength value="9"/>
                  <xs:pattern value="([A-Z0-9 ~!@#%&()*+=:;&quot;,./&lt;&gt;?^_ -])*"/>
                </xs:restriction>
              </xs:simpleType>
            </xs:element>
            <xs:element name="GradeLevelCode">
              <xs:annotation>
                <xs:documentation>E0017 GRADE-LEVEL-CODE</xs:documentation>
              </xs:annotation>
              <xs:simpleType>
                <xs:restriction base="xs:string">
                  <xs:enumeration value="EE"/>
                  <xs:enumeration value="PK"/>
                  <xs:enumeration value="KG"/>
                  <xs:enumeration value="01"/>
                  <xs:enumeration value="02"/>
                  <xs:enumeration value="03"/>
                  <xs:enumeration value="04"/>
                  <xs:enumeration value="05"/>
                  <xs:enumeration value="06"/>
                  <xs:enumeration value="07"/>
                  <xs:enumeration value="08"/>
                  <xs:enumeration value="09"/>
                  <xs:enumeration value="10"/>
                  <xs:enumeration value="11"/>
                  <xs:enumeration value="12"/>
                </xs:restriction>
              </xs:simpleType>
            </xs:element>
            <xs:element name="PETEventSet" maxOccurs="unbounded">
              <xs:complexType>
                <xs:all>
                  <xs:element name="EnrollDate">

```

```

<xs:annotation>
  <xs:documentation>E1050P ENROLL-DATE</xs:documentation>
</xs:annotation>
<xs:simpleType>
  <xs:restriction base="xs:date">
    <xs:minInclusive value="2016-06-01"/>
    <xs:maxInclusive value="2017-08-31"/>
  </xs:restriction>
</xs:simpleType>
</xs:element>
<xs:element name="WithdrawDate" minOccurs="0">
  <xs:annotation>
    <xs:documentation>E1051P WITHDRAW-DATE</xs:documentation>
  </xs:annotation>
  <xs:simpleType>
    <xs:restriction base="xs:date">
      <xs:minInclusive value="2016-06-01" fixed="false"/>
      <xs:maxInclusive value="2017-08-31"/>
    </xs:restriction>
  </xs:simpleType>
</xs:element>
</xs:all>
</xs:complexType>
</xs:element>
</xs:sequence>
</xs:complexType>
</xs:element>
</xs:sequence>
</xs:complexType>
</xs:element>
</xs:sequence>
</xs:complexType>
<xs:key name="PETKey">
  <xs:selector xpath="PETRecord"/>
  <xs:field xpath="StudentID"/>
</xs:key>
</xs:element>
</xs:sequence>
</xs:complexType>
</xs:element>
</xs:schema>

```

### PET XSD Data Types and Restrictions

PET supports built-in data types. Restrictions control acceptable values for XML elements. Restrictions also used in the XSD validation process validate both the structure of the XML file and the data values against the XML Schema Definition.

**Note:** In constructing a PET XML file, for each StudentID, all EnrollDate elements are clustered together followed by all WithdrawDate elements clustered together.

#### PET XSD Data Types and Restrictions

Element Name	Data Type	Restriction
StudentID	String	<ul style="list-style-type: none"> <li>The only acceptable value for the first position is an „S“ or a character in the range of 0 to 8.</li> <li>For positions two through nine, the only acceptable value is eight characters in a sequence with each character in a range from 0 to 9.</li> </ul>
TXUniqueStudentID	String	<ul style="list-style-type: none"> <li>The TX-UNIQUE-STUDENT-ID is issued to schools by the TSDS TX Unique ID Application. The TX-UNIQUE-STUDENT-ID cannot be generated by a Local Education Agency (LEA).</li> </ul>

Element Name	Data Type	Restriction
<b>FirstName</b>	String	<ul style="list-style-type: none"> <li>• The minimum length is 1 and the maximum length is 17 characters .</li> <li>• White space is preserved.</li> <li>• The only acceptable value is a sequence of at least 1 to 17 characters with each character either an upper case A through Z, an apostrophe, a hyphen, a 0 through 9, or a space.</li> </ul>
<b>MiddleName</b>	String	<ul style="list-style-type: none"> <li>• The minimum length is 0 and the maximum length is 14 characters .</li> <li>• White space is preserved.</li> <li>• The only acceptable value is a sequence 0 to 14 characters with each character either an upper case A through Z, an apostrophe, a hyphen, a 0 through 9, a space, or an equal sign.</li> </ul>
<b>LastName</b>	String	<ul style="list-style-type: none"> <li>• The minimum length is 1 and the maximum length is 25 characters .</li> <li>• White space is preserved.</li> <li>• The only acceptable value is a sequence of at least 1 to 25 characters with each character either an upper case A through Z, an apostrophe, a hyphen, a 0 through 9, or a space.</li> </ul>
<b>BirthDate</b>	Date	<ul style="list-style-type: none"> <li>• This data type implements an International Standards Organization (ISO) data type in the form of yyyy-mm-dd.</li> <li>• BirthDate must be a valid date.</li> </ul>
<b>SexCode</b>	String	<ul style="list-style-type: none"> <li>• Limited to a single character.</li> <li>• The only acceptable value is one of the following letters: “M” or “F”.</li> </ul>
<b>GenerationCode</b>	String	<ul style="list-style-type: none"> <li>• Optional element.</li> <li>• Minimum length of 0 and a maximum length of a single character.</li> <li>• If provided, the only acceptable value is a single character in a range from 1 to 9.</li> </ul>
<b>AmericanIndianAlaskanNativeCd</b>	String	<ul style="list-style-type: none"> <li>• Limited to a single character.</li> <li>• The only acceptable values are single characters 0 and 1.</li> </ul>
<b>AsianCd</b>	String	<ul style="list-style-type: none"> <li>• Limited to a single character.</li> <li>• The only acceptable values are single characters 0 and 1.</li> </ul>
<b>BlackAfricanAmericanCd</b>	String	<ul style="list-style-type: none"> <li>• Limited to a single character.</li> <li>• The only acceptable values are single characters 0 and 1.</li> </ul>
<b>NativeHawaiianPacificIslandCd</b>	String	<ul style="list-style-type: none"> <li>• Limited to a single character.</li> <li>• The only acceptable values are single characters 0 and 1.</li> </ul>
<b>WhiteCd</b>	String	<ul style="list-style-type: none"> <li>• Limited to a single character.</li> <li>• The only acceptable values are single characters 0 and 1.</li> </ul>
<b>HispanicLatinoCd</b>	String	<ul style="list-style-type: none"> <li>• Limited to a single character.</li> <li>• The only acceptable values are single characters 0 and 1.</li> </ul>
<b>PETData</b>	N/A	<ul style="list-style-type: none"> <li>• Section of the XML file that contains all of the PET events for a given student organized by Campus ID of Enrollment.</li> </ul>

Element Name	Data Type	Restriction
<b>CampusData</b>	N/A	<ul style="list-style-type: none"> <li>Section of the XML file that contains all of the PET events for a given student for a single Campus ID of Enrollment organized into one or more PET Event Sets.</li> <li>A PET Event Set is comprised of one and only one enrollment event and one withdrawal event, if available. If the withdrawal event is available, it must be reported in the PET Event Set.</li> <li>For a given student, there should be one PET Event Set for each occurrence of a „real“ or physical enrollment and withdrawal from the Campus ID of Enrollment. Enrollment and withdrawal events created internally in support of a program or eligibility change should not be reported.</li> </ul>
<b>CampusIDofEnrollment</b>	String	<ul style="list-style-type: none"> <li>Declared as a string data type in order to allow for zeros in the first position.</li> <li>The only acceptable value is nine characters in a sequence with each character in a range from 0 to 9.</li> </ul>
<b>LocalID</b>	String	<ul style="list-style-type: none"> <li>LocalID is an optional element from the point of view of the PET XSD. If provided, it has been declared as a string data type with a minimum length of 0 and a maximum length of 9.</li> <li>Consistent with the <i>Texas Education Data Standards</i> Name Field pattern, any of the following characters, in addition to the space character, are valid:  ABCDEF GHIJK LMNOPQR STUVWXY Z0123456789 ~ ! @ # \$ %  ^ &amp; * ( ) - _ + = ; : " ' , . / &lt; &gt; ?</li> </ul>
<b>GradeLevelCode</b>	String	<ul style="list-style-type: none"> <li>GRADE-LEVEL-CODE indicates the current grade level of the student.</li> <li>The only acceptable value is one of the following: EE, PK, KG, 01, 02, 03, 04, 05, 06, 07, 08, 09, 10, 11, 12</li> </ul>
<b>PETEventSet</b>	N/A	<ul style="list-style-type: none"> <li>Section of the XML file that contains the PET events for a single PET Event Set. This set must contain one enrollment event and one withdrawal event, if available.</li> <li>At most, a given PET Event Set will contain one enrollment event and one withdrawal event.</li> </ul>
<b>EnrollDate</b>	Date	<ul style="list-style-type: none"> <li>Required data element.</li> <li>A PET Event Set must contain one enrollment event.</li> <li>The only acceptable value is a valid date with a minimum value greater than or equal to 2016-06-01 and less than or equal to 2017-08-31.</li> </ul>
<b>WithdrawDate</b>	Date	<ul style="list-style-type: none"> <li>Required data element and must be reported when available.</li> <li>A PET Event Set may contain one withdrawal event.</li> <li>The only acceptable value is a valid date with a minimum value greater than or equal to 2016-06-01 and less than or equal to 2017-08-31.</li> </ul>